

Combo Kit

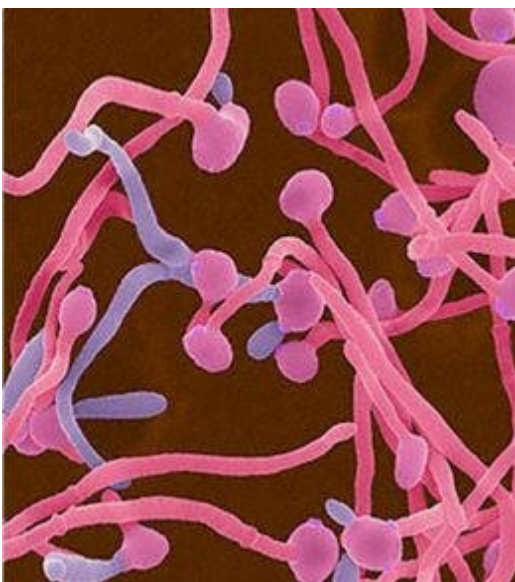


Read entire instructions before consuming...

WHAT IS CANDIDIASIS?

Candida Albicans is a single-celled yeast-like fungus that can be found in and on the mucous membranes of many regions of the body. Within a healthy immune system and given ample amounts of good “friendly” bacteria, this fungus remains in balanced proportion. However, when the healthy balance or correct intestinal medium is disturbed, the friendly bacteria lose their stronghold and this fungus (as well as other pathogenic substances, e.g., related yeasts and fungi, bacteria, viruses, parasites, etc.) is allowed to multiply and colonize throughout the mucous membranes of the gastrointestinal tract.

If the yeast gets out of control, and the gastrointestinal tract lining becomes too weakened and permeable, the fungus in turn can infiltrate into the blood and migrate throughout the body. Once this environmental change has taken place, a state of Dysbiosis may follow (a context where there is a greater number of pathogenic microorganisms inhabiting the gastrointestinal tract than there are beneficial ones).



SYMPTOMS OF CANDIDIASIS:

Symptoms range from gastrointestinal tract troubles such as bloating, excessive gas, halitosis, chronic abdominal distension, diarrhea, thrush, colitis, chronic indigestion and digestive weakness, to skin problems such as acne, scalp afflictions, nail fungus, diaper rash, athlete's foot, jock itch, hive-like symptoms, rash, eczema, psoriasis to female disorders such as hormonal system changes, disruption of normal monthly cycle (PMS, dysmenorrhea, early periods, etc.), vaginal itching, cystitis, yeast infections, bladder disorders, and vaginal swelling. There are also similar male disorders, neurological Neuromuscular disorders, respiratory disorders, emotional or mental disorders and cardiovascular disorders that have all been linked to Candidiasis. The most important thing to remember is that with decreased immune system activity, these symptoms run unchecked. It is therefore very important to build up the immune system through proper eating and selective use of herbs and or proper supplements such as Standard Process, Whole-istic Solutions and Optimal Health Systems among others.

Citrus Enhanced:

Citrus Enhanced is a natural quaternary compound extracted from the seed and pulp of certified organically grown grapefruit. Each white spoonful contains the equivalent of 35 mg organic grapefruit seed extract, Pseudowintera colorata extract from the rain forests of New Zealand, Suma root from South America, and green papaya powder for enzymatic action and anti parasitic/fungal components.

Dosage:

Citrus Enhanced is highly concentrated and MUST be diluted. Dilute 5 heaping white spoonfuls (enclosed) in 6-8 oz of water 3 times per day. Children, the old, and the very sick should reduce this dosage to one spoonful once per day for the entire program. Some people take Citrus Enhanced sporadically when their gut feels "yeasty"

Candi Go:

To support the body in ridding itself of an over abundance of Candida and to help prevent recurrence. This liquid herbal blend not only kills Candida, it changes the environment in which it can exist in the first place. It can also limit or kill other opportunistic microbes.

Proprietary Blend:

1) Pau D'Arco Bark---limits Candida growth long term as a tonic 2) Fresh Black Walnut Hull---kills parasites and yeast 3) Oregon Grape Root---increases naturally produced HCl (Hydrochloric acid) in the stomach which digests protein. Candida cannot thrive around normal amounts of HCl in the digestive track. It also limits bad bacteria in the gut and creates an environment where good flora can thrive. 4) Fresh Spilanthes Flower----increases naturally produced saliva which digests carbohydrates and also limits Candida presence. Candida cannot thrive in saliva. Spilanthes also stimulates immune function. 5) Wormwood Herb---kills bacteria and stimulates the liver to cleanse at an increased rate. 6) Oregano Oil---the most powerful natural botanical to kill Candida now (acutely) as well as other yeast, mold, parasites and bacteria.

The dosage is 20 drops in an ounce of water taken three times per day 15 minutes to 1/2 hour after Candi Mia and Citrus Enhanced with Moflora shake. If you do not wait 15 to 30 minutes the herbal extracts in the Candi Go can limit the success of the probiotics in the Moflora through direct contact. Taken 15-30 minutes later, it can help create an environment where probiotics can thrive.

Candi Mia :

A homeopathic support preparation is taken to assist in elimination of Candida and related organisms. This consists of homeopathic dilutions of; Altemaria, Aspergillus niger, Candida albicans, Candida torresil, Candida tropicalis, Cryptococcus, Geotrichum candida, Mucor racemosus, Penicillium tatum, Pulularia pullulans, Rhizopos nigra (all 30x, 60x, 100x).

Dosage:

Candi Mia should be administered under the tongue. The dosage is 20 drops taken three times per day 15 minutes to 1/2 hour before Citrus Enhanced and Moflora shake.

Moflora:

Probiotics help your body to synthesize essential vitamins in the intestinal tract including B12; they produce enzymes important for proper assimilation of food, promote regularity and good gastrointestinal health, and contribute to pleasant breath. Some studies show Probiotics help with lactose intolerance and may reduce blood fat and cholesterol levels and help increase the immune system. Our formulator was Khem Shahani the World leading authority on Probiotics. Khem stresses, the less strains of Probiotics in your blend the better your blend. This insures more of each organism in the blend. Better to have a lot of 2 or 3 strains in the blend than 10 or 12 strains. Most importantly that the Probiotics are in a FOS base which both protects them and feeds them. Khem also recommends Probiotics are to be consumed as a powder and not in pill or tablet form. Khem daily allowance of Probiotics is 10 - 20 billion per day. Khem claims the 50 or higher billion blends are a sales gimmick as the body cannot possibly absorb that much in a day. Lastly 99.9% of Probiotics come from pigs and cows even if they are labeled dairy free, because they are not legally a dairy product containing milk, cheese, etc.

Moflora consists of human specific Probiotics: L. Acidophilus, L. Bifidus, and B. Brevis. At the time of production it is guaranteed to contain 20 billion microorganisms per gram of Lactobacillus Acidophilus, Lacto-bacillus lactis, Bifidobacterium Bifidum, Bifidobacterium infantis, Lactobacillus plantarum, Lactob-acillus salifarius, and Lactobacillus casei in a base of vegetable fructooligosaccharides.

Its unique formulation allows it to be resistant to stomach and bile acids so that it adheres well to human epithelial cells. In an eight year period over 22 independent research trials and 7 million dollars were spent conducting tests on the efficiencies of probiotics. As a result of this research the BT1386 strain of L. Acidophilus has been found to be the most compatible with the conditions in the human gastrointestinal tract. All the strains contained in Moflora are formulated to work together to repopulate the intestinal tract and improve overall immune system activity. Moflora is lactose free and is certified to be free of E. Coli, Salmonella, Staph and other pathogens.

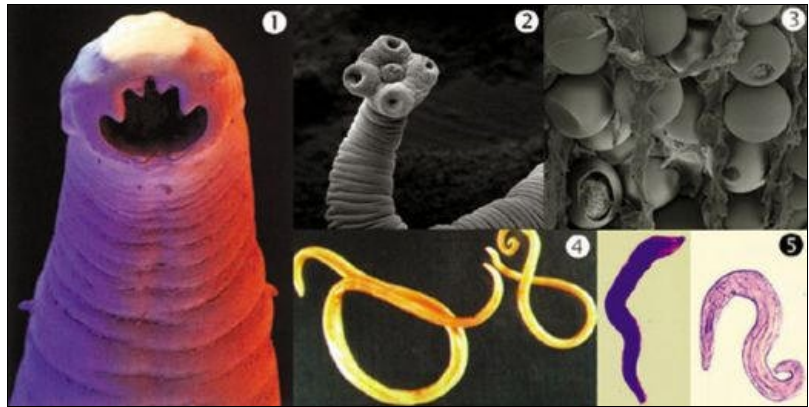
Dosage:

Moflora should be taken after the Candi Mia drops with a large glass of water or juice. Mix with the enclosed white spoon, 3-5 level spoonfuls with water or juice and consume.

"Monsters Within"

Old stagnant waste material in the intestines can block proper absorption and elimination of food as well as serve as a breeding ground for harmful organisms and parasites. These unwelcome inhabitants can pollute the blood, organs, and lymph system, causing degenerative diseases. The most alarming news is that over 60-80% of the world population has worms and parasites in their intestinal tracts.

Medical textbooks have estimated that over 150 million people in America alone suffer from intestinal parasite infection.



Over 55 million American children have worms. Once in the intestinal tract, parasites have easy access to other parts of the body where they imitate various symptoms and diseases. Even worse, it can enlarge the liver, invade the lungs, brain and skin, and can cause grave complications.

Para Mia:

Homeopathic support to assist in elimination of intestinal parasites and their eggs. Chuan-Lien-Tzu, Shih-Chun-Tzu, Nan-Kua-Tzu, Fei-Tzu, Lei-Wan (all 3x, 6x, 12x, 30x). Cinaabrotanum 2x, Filix mas 2x, Juglans nigra 2x, Sabadilla 3x, Spigelia marilandica 3x, Berberis vulgaris 3x, Teucrium Marum 3x, Cuprum, Metallicum 6x, Artemisia absinthium 6x, Eugenia caryophyllata 12x Homeopathic support to assist in elimination of intestinal parasites. Chuan-Lien-Tzu, Shih-Chun-Tzu, Nan-Kua-Tzu, Fei-Tzu, Lei-Wan (all 3x, 6x, 12x, 30x). Cina abrotanum 2x, Filix mas 2x, Juglans nigra 2x, Sabadilla 3x, Spigelia marilandica 3x, Berberis vulgaris 3x, Teucrium Marum 3x, Cuprum, Metallicum 6x, Artemisia absinthium 6x, Eugenia caryophyllata 12x

Dosage

Para Mia should be administered under the tongue. The dosage is ten drops taken three times per day 15 minutes to 1/2 hour before Para Go, Citrus Enhanced and Moflora drink. For highly sensitive individuals you may apply to the skin (imbrication) for the first 30 days

Para Go

These anti-Parasitical liquid herbs are combined to support the body in ridding itself of an over abundance of parasites and their eggs; Bilva Herb, Manuka, Black Walnut Hulls, Burdock, Eclipta alba, Phanthus Embelia ribesoverabundance of Parasit, Fresh Ginger Root, Gentian Root, Neem leaves, Quassia Bark, Wormwood, Wormseed, Pumpkin seed, Pau D' Arco, Guggulu, Oregon Grape root, Propolis, Cinnamon, Sassafras, Echinacea.

Dosage

Para Go should be administered under the tongue. The dosage is ten drops taken three times per day 15 minutes to 1/2 hour after Para Mia together with Citrus Enhanced, and Moflora. For highly sensitive individuals you may apply to the skin (imbrications) for the first 30 days.

Simplified Directions: (open Candi Mia and Candi Go with care, they are VERY full)

At Ejuva we ALWAYS recommend a raw food meals whether cleansing or not (seeds, nuts, fruits and veggies). Some people may be limited on the amount of fruit they can consume (if any) depending on the amount of infestation of Yeasts/Molds.

Always consume Ejuva on an empty stomach!

Use one dropper for the Mia's and one dropper for the Go's.

1. Place 20 drops of Candi Mia and 10 drops of Para Mia under your tongue and consume
2. Wait 15 to 30 minutes then in 6-8 oz of water (we prefer RO) mix 5 white spoonful's of both Citrus Enhance and Moflora then consume
3. Then wait 15-30minutes and place 20 drops of Candi Go in and 10 drops of Para Go in 1 oz of water and consume.

Do the above 3 x's per day for 14 days

How to take the Combo kit with the Ejuva Intestinal Cleanse:

Start Combo Kit when you reach the 3rd phase of the Intestinal Cleanse. This is by far the most powerful way to consume the Combo Kit. This because the Intestinal Cleanse WILL destroy the environment in which both the yeast and parasites thrive. Thus resulting in a much easier time eliminating the Candida, Parasites and their eggs. In fact, the Intestinal Cleanse has anti fungal and anti parasitical herbs in it, not only does it destroy the environment but it places the Candida and parasites themselves in a weakened state.

1. Take Candi Mia and Para Mia as directed above.
2. 15 minutes later mix 20 drops of Candi Go and 10 Para Go in approx 4 ounces of water and consume with the Power, Balance, and Renew
3. Wait 30 minutes and mix up a Combi shake using 5 white spoonful's of Moflora and 5 white spoonful's of Citrus Enhance
Do this 3 x's per day during the 3rd and 4th phases of the Intestinal Cleanse.

A NOTE ON DOSAGE S Like all Ejuva programs, the Combo Kit can be adjusted for particular needs. If you are not feeling well, or are feeling uncomfortable while on the Combo Kit, decrease the dosages. You may feel fine while on the program and wish to increase the dosages slightly; this is fine. Each person's body will react differently while on the program and it may take a couple of days to find which amount of herbs work best with your body (and with your schedule!). If after two weeks you feel the candida or parasites have not cleared you may want to stay on the program for a few more days. If you have any questions while on the program contact your health or healing practitioner or Dr. Charles Partito at EJUVA toll free 866 463 5882 or charles@ejuva.com

STOP!!!!

Taking supplements that you don't you need. Most people simply take the supplements their favorite Author/Lecturer recommends without having any idea if your body is in need of those nutrients.

Truth is, your favorite Author has NO IDEA what nutrients your body needs and neither do you. Arbitrarily selecting supplements based on guess work is illogical. How do you know what nutrient your body is deficient? Which Minerals, which Vitamins, which Enzymes? How do you know how well your body digests and assimilates the supplements you and your author has chosen for you? How do you know when you no longer need the supplements you suspected you needed? The answer is, you don't!

America's most successful Holistic Doctor Joel Robbins and The owner of EJUVA Dr. Charles Partito N.D. who have been reversing the the so called irreversible for decades have developed a program that will answer all the above questions and a whole lot more.

Do you want to know your body's true nutritional health picture? Which supplements your body actually needs? Its simple, accurate, inexpensive and done from the privacy of your own home.

Dr. Robbins and Dr. Partito have more than 40 years of combined experience in this field and together have developed a program that will determine your body's nutritional needs without any guess work. You will be able to see first hand what nutrients your body is lacking and, just as important, when you no longer need the supplement.

Dr. Robbins and I could not understand why people would arbitrarily buy supplements based on nothing but an Authors advise. No one, not even an author can possibly know what one needs without testing. So we developed an inexpensive and highly accurate test to determine peoples nutritional needs to insure they purchase only the supplements their body requires. We call this program "Health Through the Mail" and it has helped thousands find what their body is lacking.

According to Dr Robbins consuming supplements that your body does not need actually costs the body in valuable nutrients even if the supplements are live.

To find out more about your body's deficiencies visit our website at www.ejuva.com or call us at 866 Go Ejuva (463 5882)